

# TECHNICAL FICHE / Fiche tecnica

Trademark/Marca:

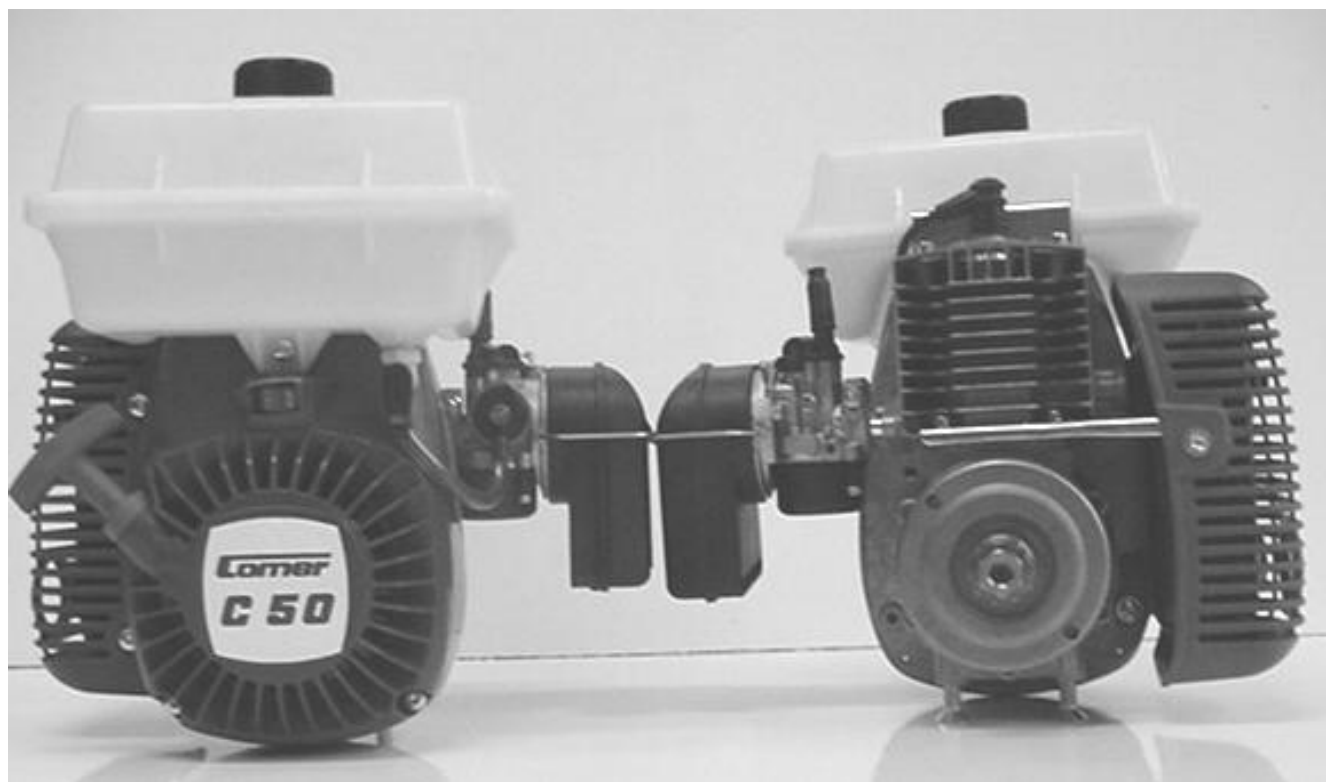
**Comer**<sup>®</sup>

Type/Modello: *C 50*

Manufacturer/Costruttore:

**COMER SpA**

42011 Bagnolo in Piano (RE)



## TECHNICAL INFORMATION INFORMAZIONI TECNICHE

**BORE/ALESAGGIO**  
40 mm

**STROKE/CORSA**  
38 mm

**DISPLACEMENT/CILINDRATA**  
48 cc.

### Fuel

ALIMENTAZIONE

### Ignition

Accensione

### Spark plug

Candela

### Clutch

Frizione

### Sproket

Pignone

### Carburettor

Carburatore

### Cylinder

Cilindro

-Mix 4%

-Electronic Selettra

-Elettronica Selettra

- Short Thread

- Filetto corto

- Centrifugal 3 pieces

- Centrifuga 3 ceppi

-Z 10 P7.76

-DELL'ORTO SHA-14-12L

- Cromed

- Con riporto

Nicasil

## STAMP AND SIGNATURE

(National Sporting  
Authority)

TIMBRO E FIRMA  
(Federazione Nazionale)

-----  
-

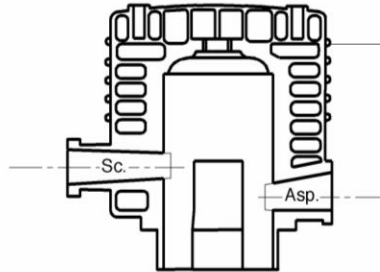
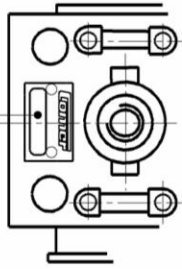
# CYLINDER/CILINDRO

COMBUSTION CHAMBER 7 cc.  
Measured on the vertical external spark plug Thread

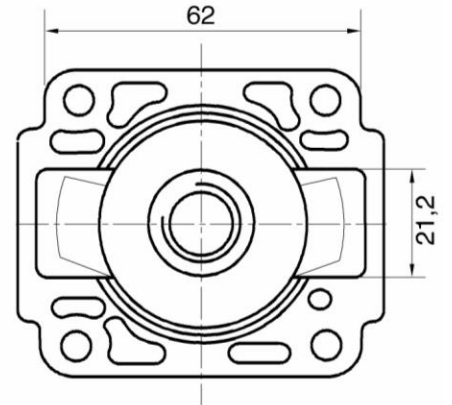
VOLUME CAMERA DI COMBUSTIONE 7 cm.<sup>3</sup> minimo  
RILEVATO ALLA ESTREMITA' SUPERIORE DEL  
FILETTO CANDELA

CYLINDER FLANGE  
FLANGIA CILINDRO

PROGRESSIVE NUMBER STAMP  
STAMPAGLIATURA NUMERO PROGRESSIVO



TOLLERANCES  $\pm 0.3$  mm  
TOLLERANZA

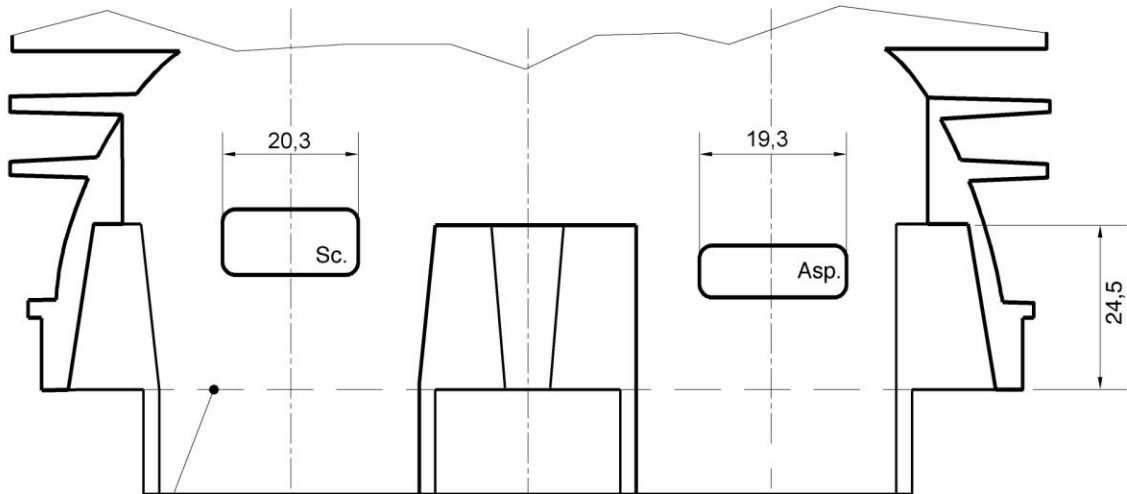


# CYLINDER DIAGRAM/DIAGRAMMA CILINDRO

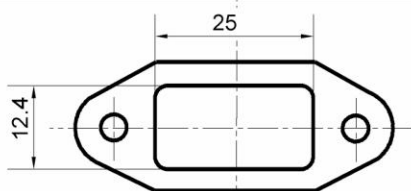
TOLERANCE FIELD OF THE SUITABLE MEASURE  $\pm 0,3$  mm.  
CAMPO DI TOLLERANZA DELLE MISURE INDICATE  $\pm 0.3$  mm

MEASURED WITH FEELER GANGE WIDTH  
10 mm THICKNESS 0.2 mm  
CONTROLLATI CON SPESSIMETRO DI LARGHEZZA  
10mm E DI SPESSORE 0.2 mm.

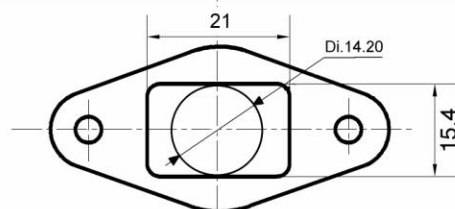
INTAKE - ASPIRAZIONE :  $123^\circ \pm 2^\circ$   
EXHAUST - SCARICO :  $135^\circ \pm 2^\circ$



CYLINDER SUPPORTING SURFACE  
PIANO DI APPOGGIO CILINDRO LAVORATO



EXHAUST  
SCARICO



INTAKE  
ASPIRAZIONE

## ***SPOOL/BOBINA***

*SELETTRA COIL - Bobina selettra*

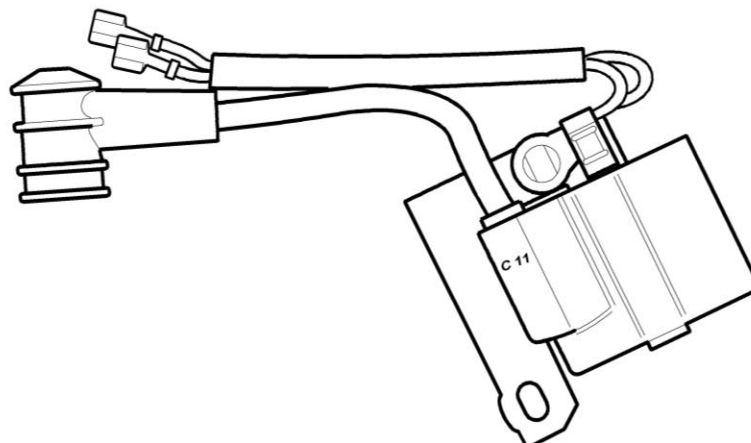
*Tipo C11*

*SELETTRA FLYWHEEL- volano selettra*

*Tipo 02.0004.66*

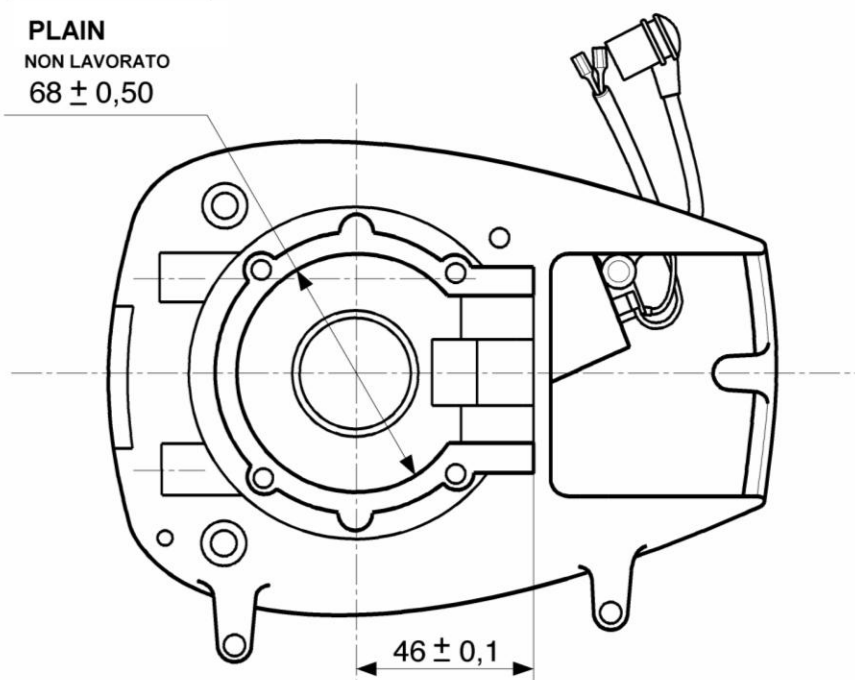
*RECOMMENDED SPARK PLUGS-*  
Candela filetto corto

*CHAMPION RCJ7Y*  
*BOSCH WS5F*



## ***CRANKCASE/BASAMENTO***

**PLAIN**  
NON LAVORATO  
 $68 \pm 0,50$

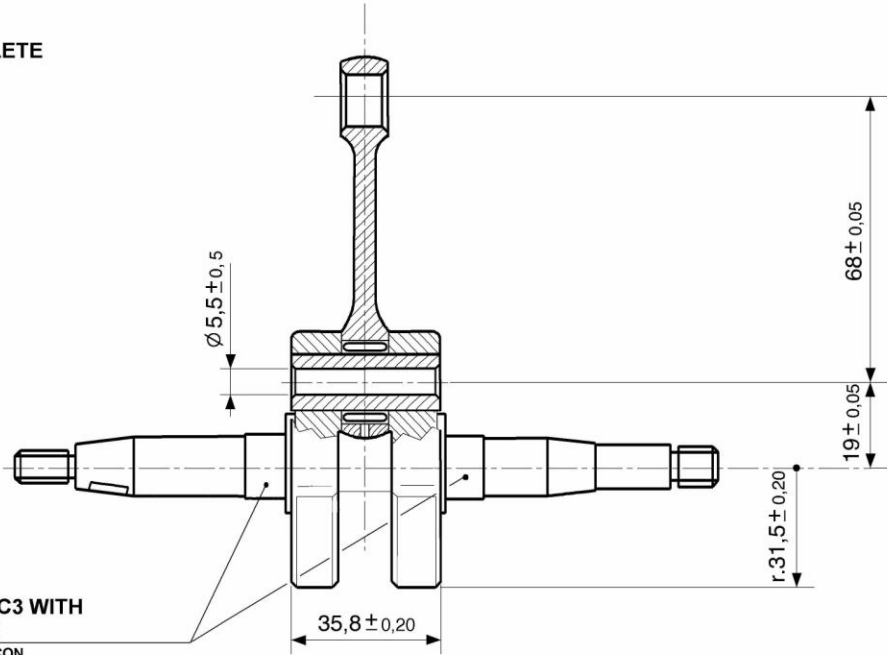


# COMPLETE CRANKSHAFT/ALBERO MOTORE

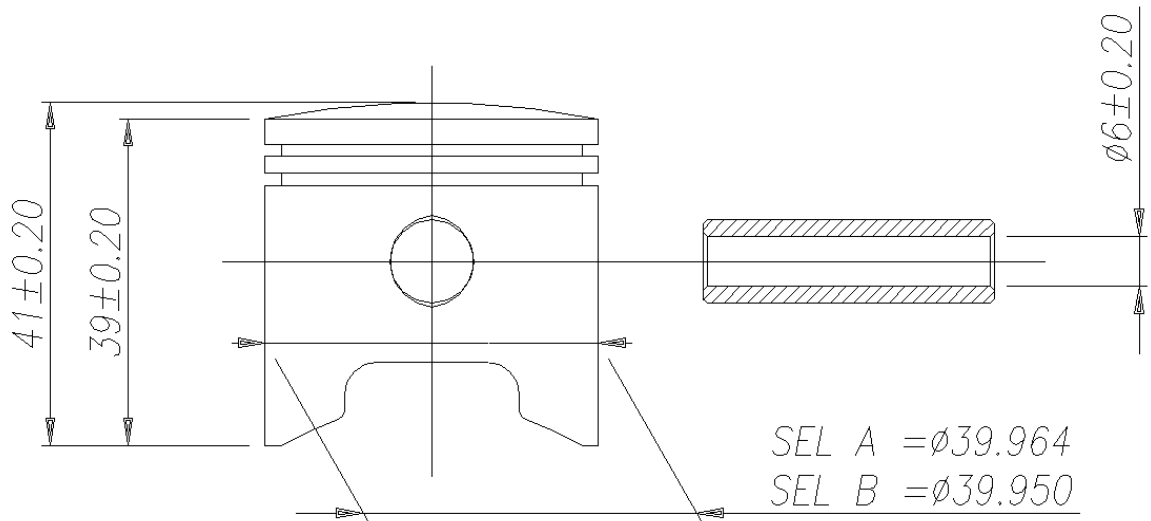
CRANKSHAFT WITH COMPLETE  
PISTON 700 gram  $\pm$  3%  
ALBERO MOTORE CON PISTONE  
COMPLETO GRAMMI 700  $\pm$  3%

ORIGINAL OIL SEALS  
MARKED "COMER"  
PARAOILI ORIGINALI  
MARCATI "COMER"

BEARINGS C3 WITH  
IRON CAGE  
CUSCINETTI C3 CON  
GABBIA METALLICA



# PISTON/PISTONE

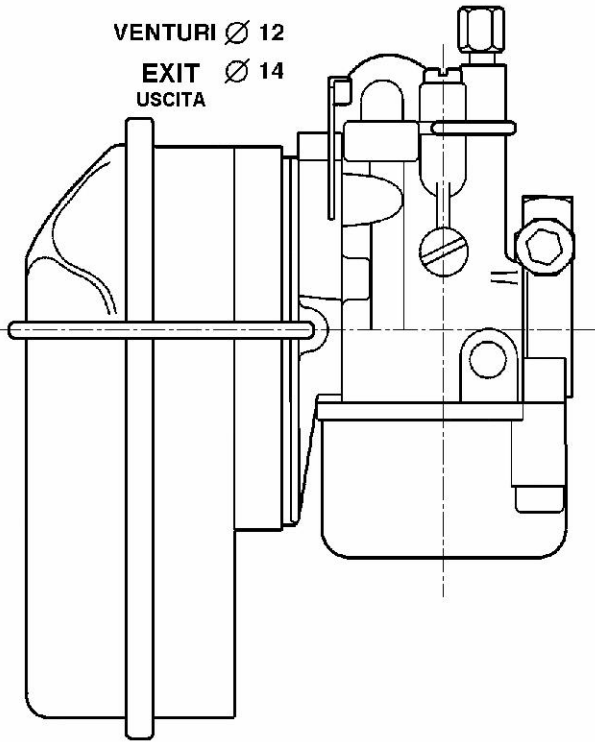


# CARBURETTOR/CARBURATORE

DELL' ORTO SHA 14-12L ORIGINAL

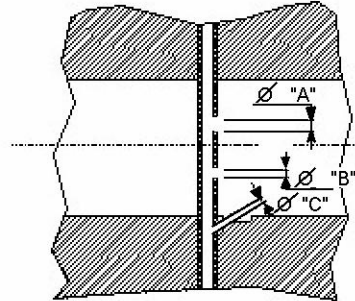
VENTURI  $\varnothing$  12

EXIT  $\varnothing$  14  
USCITA



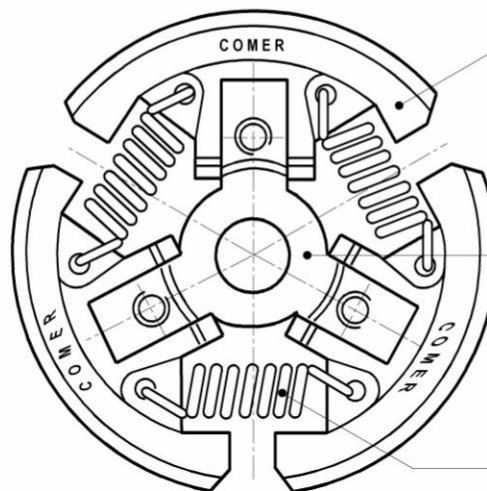
VERIFY CARBURETTOR NOZZLE  
WITH GO-NO GO GAUGE  
VERIFICA FORI POLVERIZZATORE  
CON TAMPONE NON PASSA

$\varnothing$  "A" = 1,25 mm  
 $\varnothing$  "B" = 0,80 mm  
 $\varnothing$  "C" = 0,80 mm



# CLUTCH/FRIZIONE

Peso frizione 390 g. Minimo



CLUTCH SHOE  
CEPPO COMPLETO

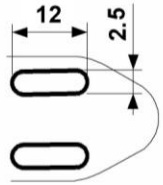
CLUTCH SPRING  
TRASCINATORE FRIZIONE

CLUTCH SPRING  
MOLLA FRIZIONE

# MUFFLER/MARMITTA

SLIT  
MUFFER  
FERITOIA MARMITTA

Tolerance -TOLLERANZA  $\pm 0.2$ mm.



# SPROCKET/PIGNONE

SPROCKET "COMER" 10 TEETH PITCH 219

PIGNONE "COMER" 10 DENTI PASSO 219

